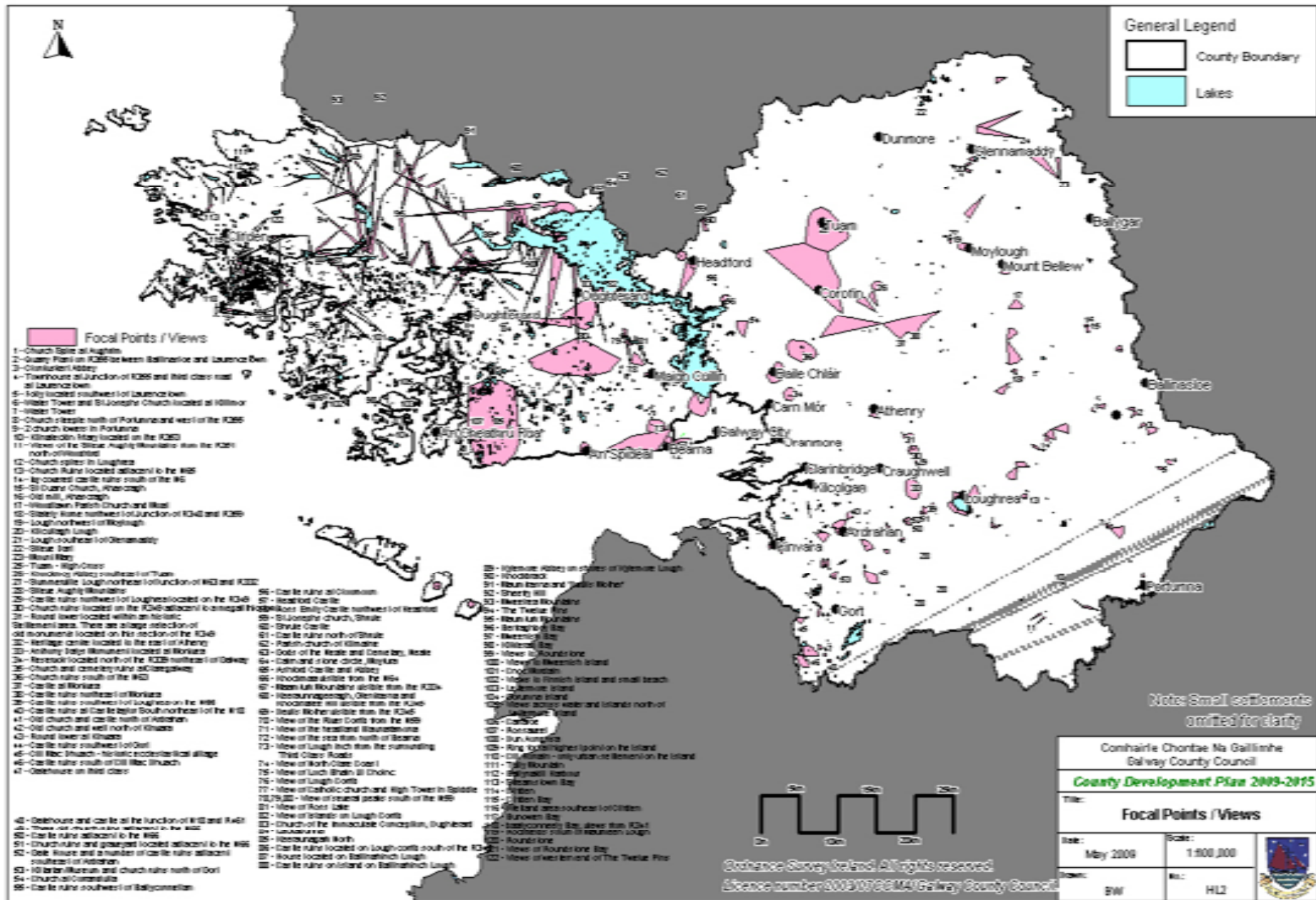


Ordnance Survey Ireland. All rights reserved Licence number 2003/07CCMA/Galway County Council.

Comhairle Chontae Na Galltíne Galway County Council	
<i>County Development Plan 2009-2015</i>	
Title: Designated Environmental Sites	
Date: May 2009	Scale: 1:800,000
Drawn: BVV	Rev.: HL1





General Legend

- County Boundary
- Lakes

Focal Points / Views

- 1- Church Spire at Aughrim
- 2- Quarry Point on R266 between Ballinacree and Laurence Owen
- 3- Clonkerril Abbey
- 4- Townhouse at junction of R266 and Old road east of Laurence Owen
- 5- 10th located southwest of Laurence Owen
- 6- Water Tower and St. Joseph's Church located at Hillier
- 7- Water Tower
- 8- Church of the Holy Spirit north of Portunacree west of the R266
- 9- 2 church towers in Portunacree
- 10- Kintraleah Mill located on the R266
- 11- View of the Slieve Magh/Mountains from the R266 north of Hillier
- 12- Church spire in Loughrea
- 13- Church ruins located adjacent to the R66
- 14- 16th century castle ruins south of the R66
- 15- St. Gabriel Church, Anarceagh
- 16- Old mill, Anarceagh
- 17- Westtown Parish Church and Mill
- 18- Stately house northwest of junction of R246 and R266
- 19- Loughnabreena on Ballygagh
- 20- Kilcolumbkille Lough
- 21- Loughnabreena of Glenamaddy
- 22- Stone Jail
- 23- Round Bay
- 24- Turin - High Cross
- 25- Knockree Milling millstone of Turin
- 26- Submarine Lough north of junction of R2 and R222
- 27- Stone High Cross
- 28- Castle ruins southwest of Loughrea located on the R246
- 29- Church ruins located on the R246 adjacent to a small hill
- 30- Round tower located within an historic settlement area. There are stone ruins of an old monument located on the east of the R246
- 31- Heritage center located in the east of Aherney
- 32- Anthony Joyce Monument located at Monkstown
- 33- Reservoir located north of the R222 northwest of Dalkey
- 34- Church and cemetery ruins at Dalkey
- 35- Church ruins south of the R22
- 36- Castle at Monkstown
- 37- Castle ruins southwest of Monkstown
- 38- Castle ruins southwest of Loughrea on the R66
- 39- Castle ruins at Carrigrohilly South of the R66
- 40- Old church and castle north of Ardaraun
- 41- Old church and well north of Ardaraun
- 42- Round tower at Killybegs
- 43- Castle ruins southwest of Doolin
- 44- Old Mac Bhuidh - historic ecclesiastical site
- 45- Castle ruins south of Old Mac Bhuidh
- 46- Castle ruins in Hillier
- 47- Castle ruins at Clonsilla
- 48- Castle ruins southwest of Ballyconnetlan
- 49- Castle ruins at Clonsilla
- 50- Castle ruins at Clonsilla
- 51- Castle ruins at Clonsilla
- 52- Castle ruins at Clonsilla
- 53- Castle ruins at Clonsilla
- 54- Castle ruins at Clonsilla
- 55- Castle ruins at Clonsilla
- 56- Castle ruins at Clonsilla
- 57- Castle ruins at Clonsilla
- 58- Castle ruins at Clonsilla
- 59- Castle ruins at Clonsilla
- 60- Castle ruins at Clonsilla
- 61- Castle ruins at Clonsilla
- 62- Castle ruins at Clonsilla
- 63- Castle ruins at Clonsilla
- 64- Castle ruins at Clonsilla
- 65- Castle ruins at Clonsilla
- 66- Castle ruins at Clonsilla
- 67- Castle ruins at Clonsilla
- 68- Castle ruins at Clonsilla
- 69- Castle ruins at Clonsilla
- 70- Castle ruins at Clonsilla
- 71- Castle ruins at Clonsilla
- 72- Castle ruins at Clonsilla
- 73- Castle ruins at Clonsilla
- 74- Castle ruins at Clonsilla
- 75- Castle ruins at Clonsilla
- 76- Castle ruins at Clonsilla
- 77- Castle ruins at Clonsilla
- 78- Castle ruins at Clonsilla
- 79- Castle ruins at Clonsilla
- 80- Castle ruins at Clonsilla
- 81- Castle ruins at Clonsilla
- 82- Castle ruins at Clonsilla
- 83- Castle ruins at Clonsilla
- 84- Castle ruins at Clonsilla
- 85- Castle ruins at Clonsilla
- 86- Castle ruins at Clonsilla
- 87- Castle ruins at Clonsilla
- 88- Castle ruins at Clonsilla
- 89- Castle ruins at Clonsilla
- 90- Castle ruins at Clonsilla
- 91- Castle ruins at Clonsilla
- 92- Castle ruins at Clonsilla
- 93- Castle ruins at Clonsilla
- 94- Castle ruins at Clonsilla
- 95- Castle ruins at Clonsilla
- 96- Castle ruins at Clonsilla
- 97- Castle ruins at Clonsilla
- 98- Castle ruins at Clonsilla
- 99- Castle ruins at Clonsilla
- 100- Castle ruins at Clonsilla
- 101- Castle ruins at Clonsilla
- 102- Castle ruins at Clonsilla

Note: Small settlements omitted for clarity

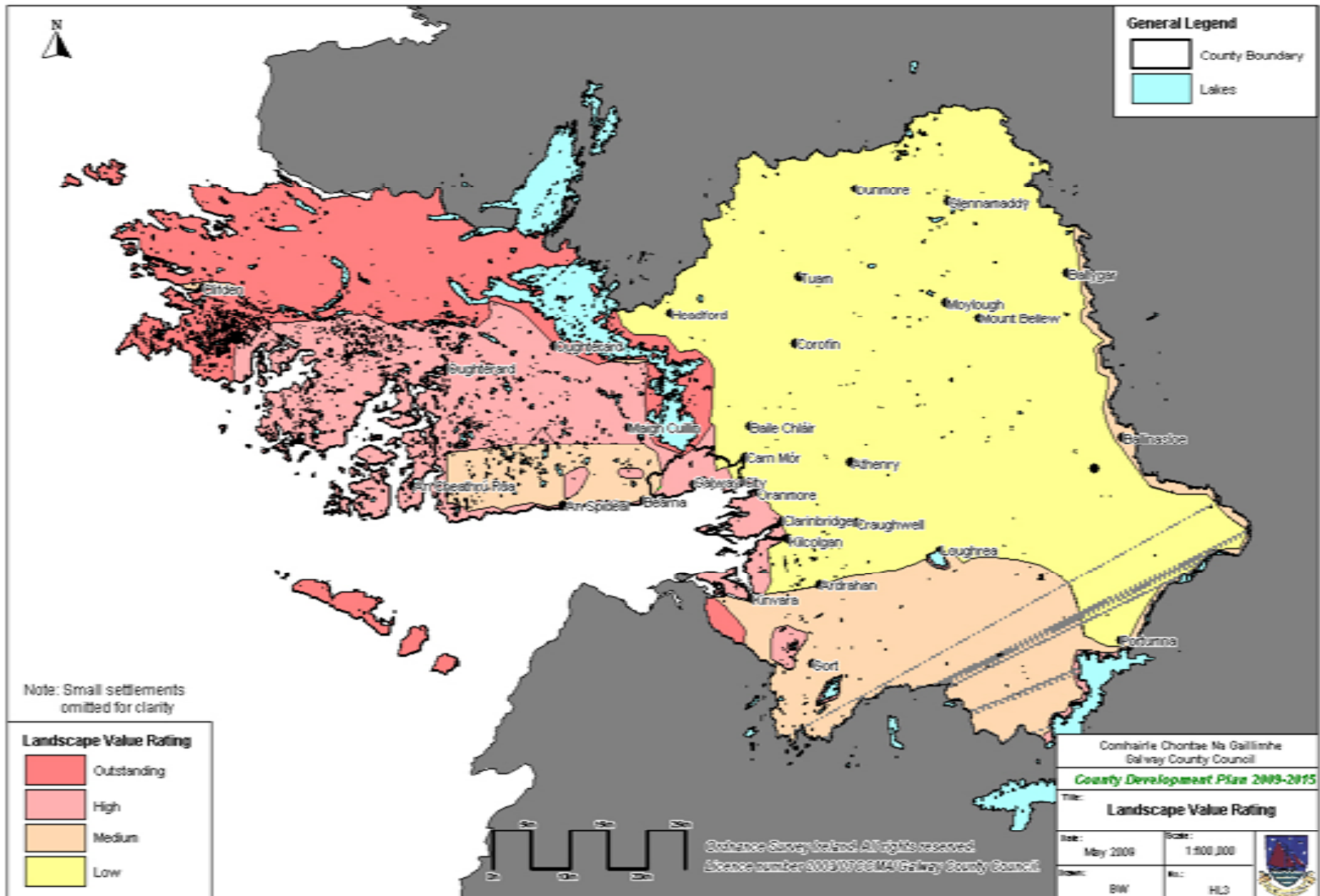
Comhairle Chontae Na Gaillimhe
Galway County Council

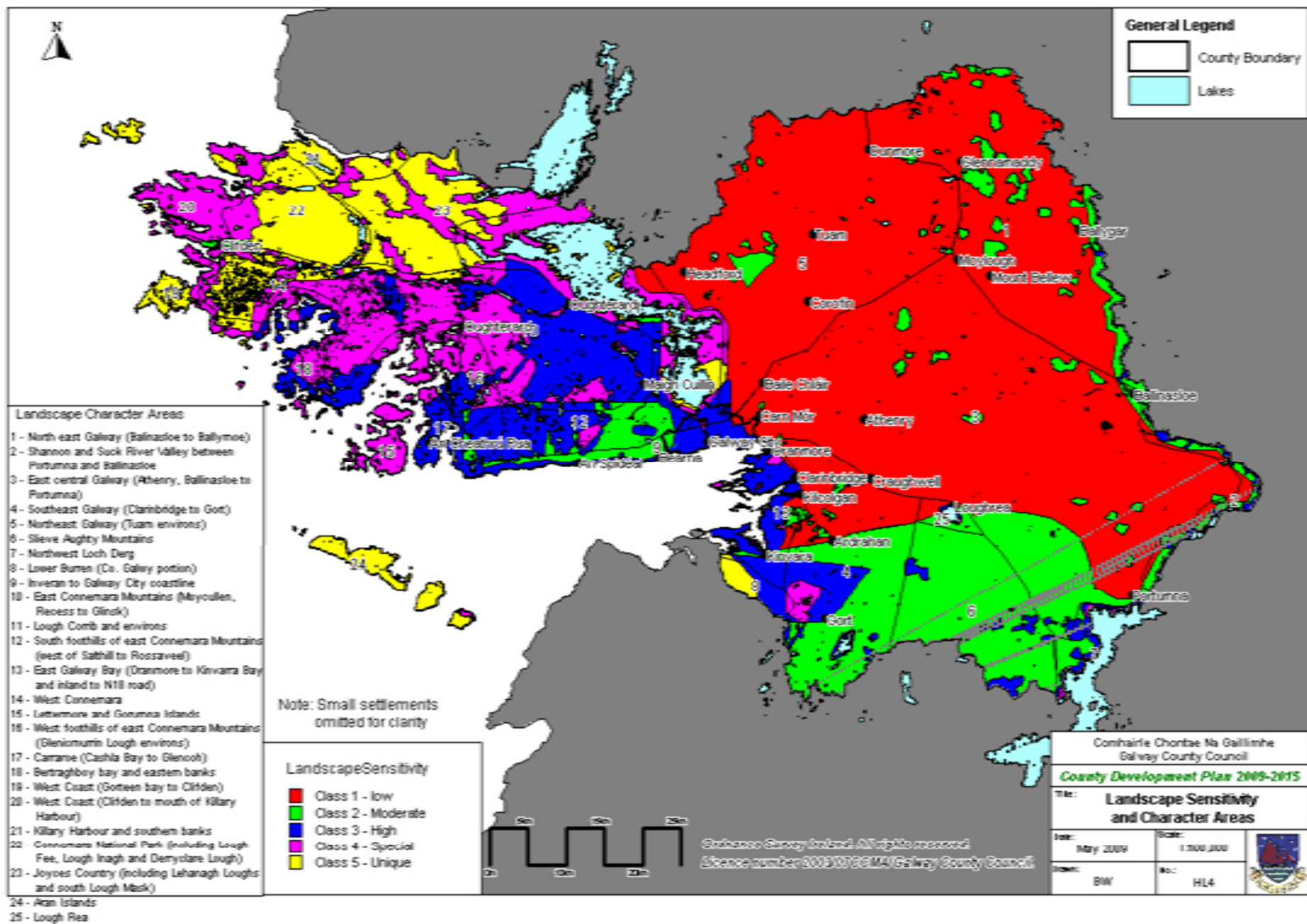
County Development Plan 2009-2015

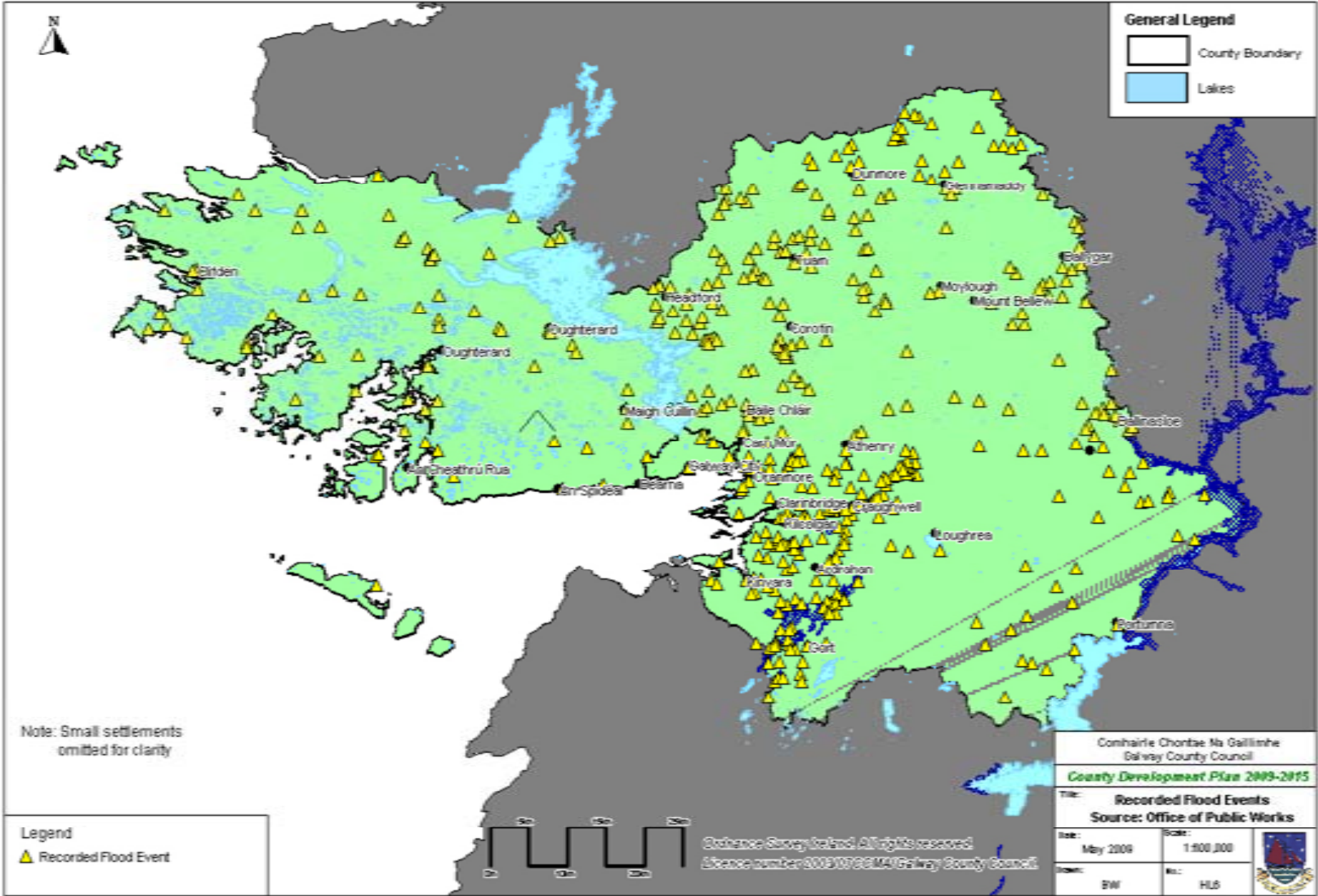
Title: **Focal Points / Views**

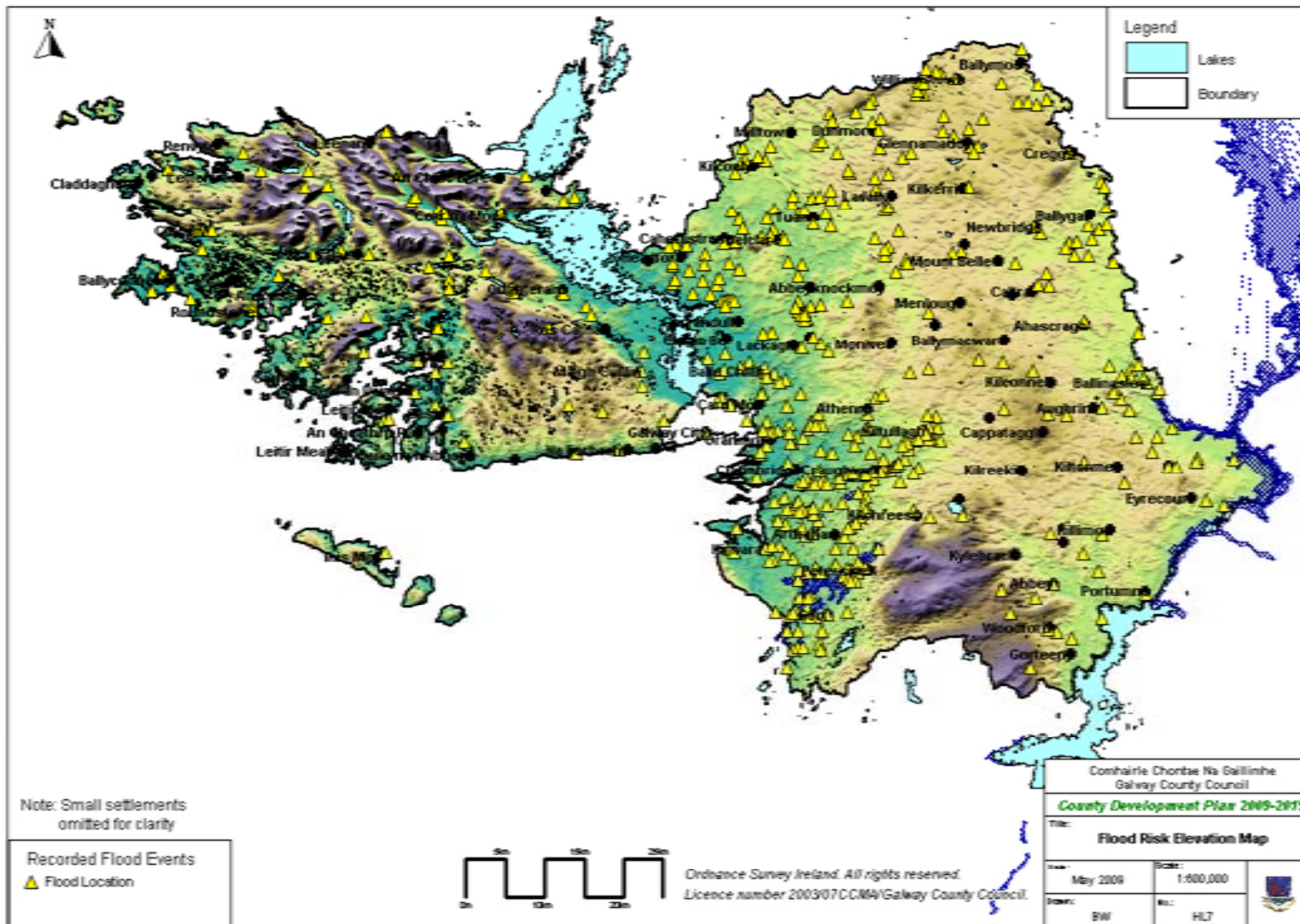
Date: May 2009	Scale: 1:500,000	
Author: BW	Ref: HL2	

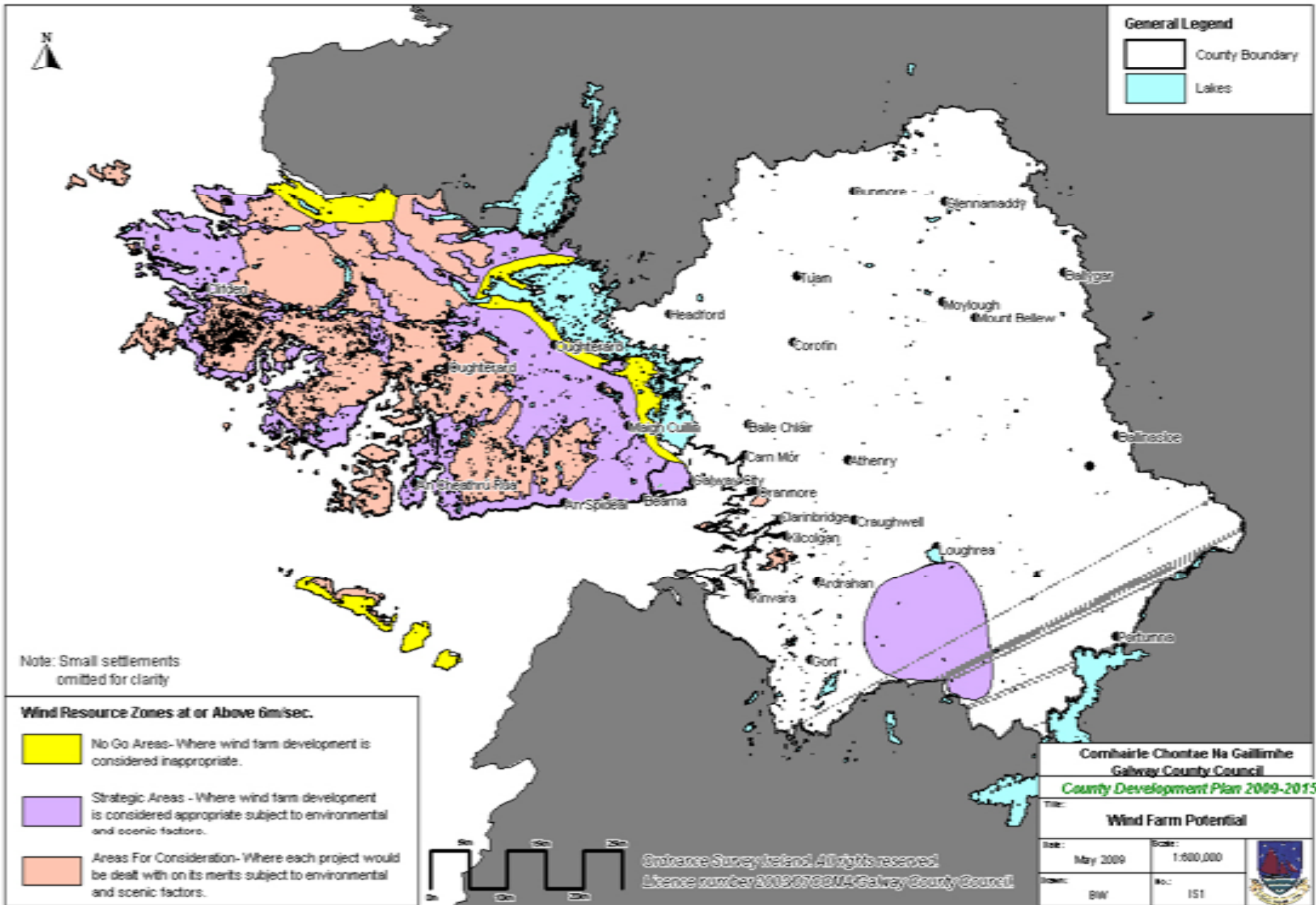
Reference Survey Ireland. All rights reserved.
License number 000500864/Galway County Council











General Legend

- County Boundary
- Lakes

Note: Small settlements omitted for clarity

Wind Resource Zones at or Above 6m/sec.

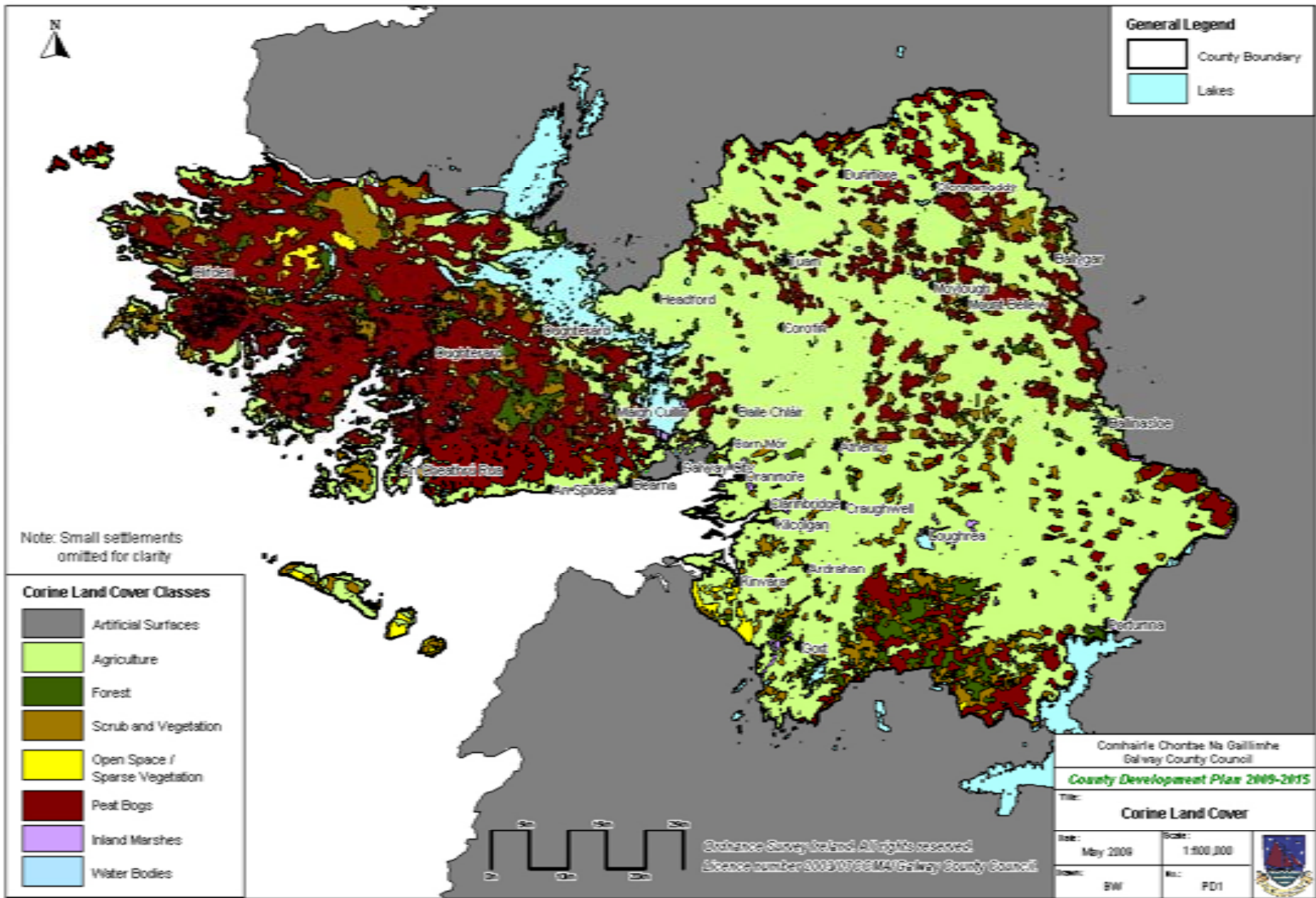
- No Go Areas - Where wind farm development is considered inappropriate.
- Strategic Areas - Where wind farm development is considered appropriate subject to environmental and scenic factors.
- Areas For Consideration - Where each project would be dealt with on its merits subject to environmental and scenic factors.

Comhairle Chontae Na Gaillimhe
Galway County Council
County Development Plan 2009-2015

Wind Farm Potential

Date: May 2009	Scale: 1:600,000
Drawn: BW	No.: 151

Entrance Survey Ireland. All rights reserved.
Licence number 2009-070204-Galway County Council



General Legend

- County Boundary
- Lakes

Note: Small settlements omitted for clarity


Corine Land Cover Classes

- Artificial Surfaces
- Agriculture
- Forest
- Scrub and Vegetation
- Open Space / Sparse Vegetation
- Peat Bogs
- Inland Marshes
- Water Bodies

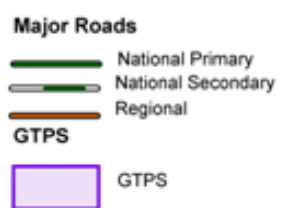
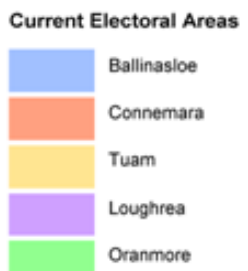
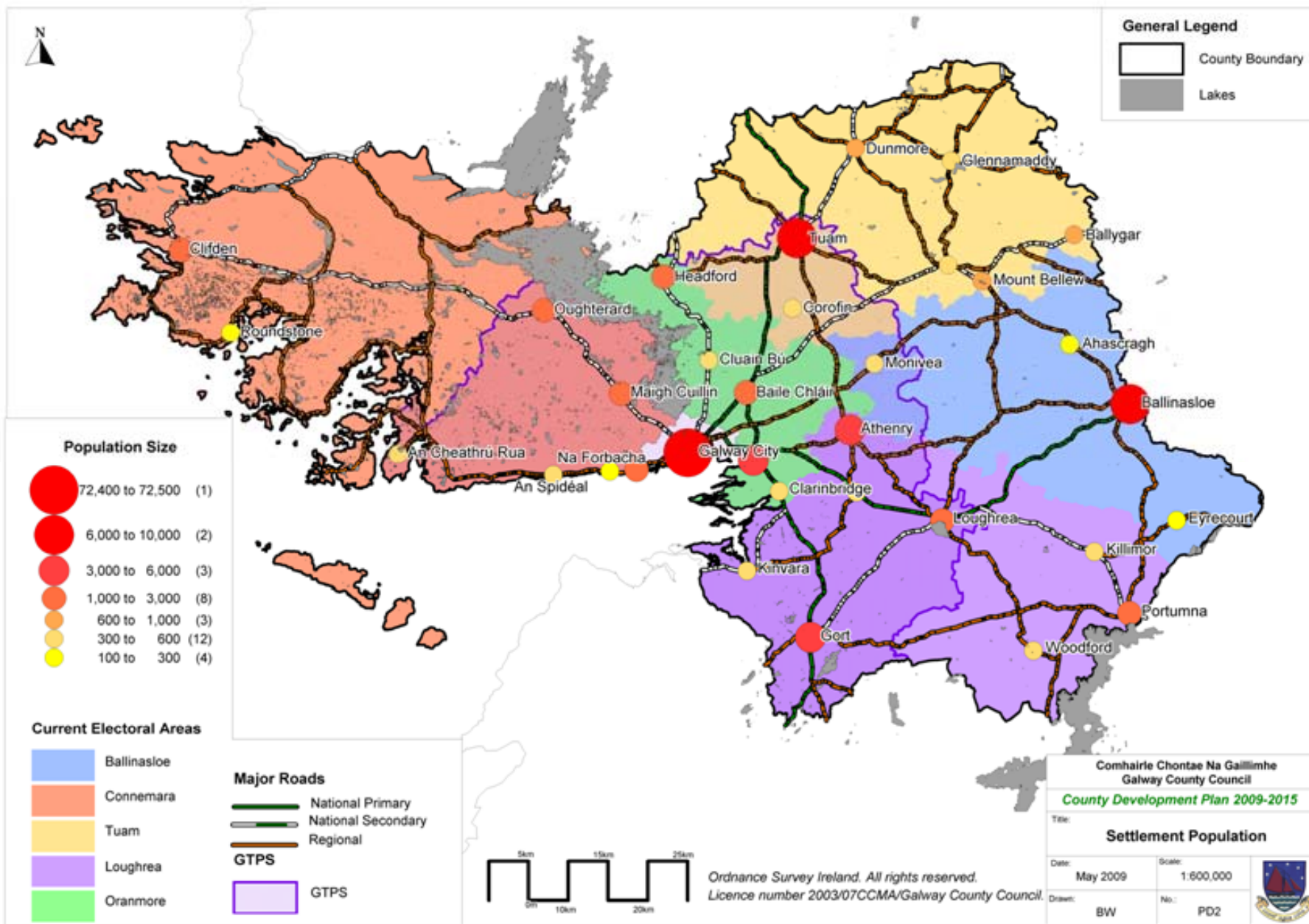
Comhairle Chontae Na Gallimhe
Galway County Council

County Development Plan 2009-2015

Title:
Corine Land Cover

Date: May 2009	Scale: 1:500,000	
Drawn: BW	No.: FD1	

Galway County Council. All rights reserved.
License number 00000786M/Galway County Council




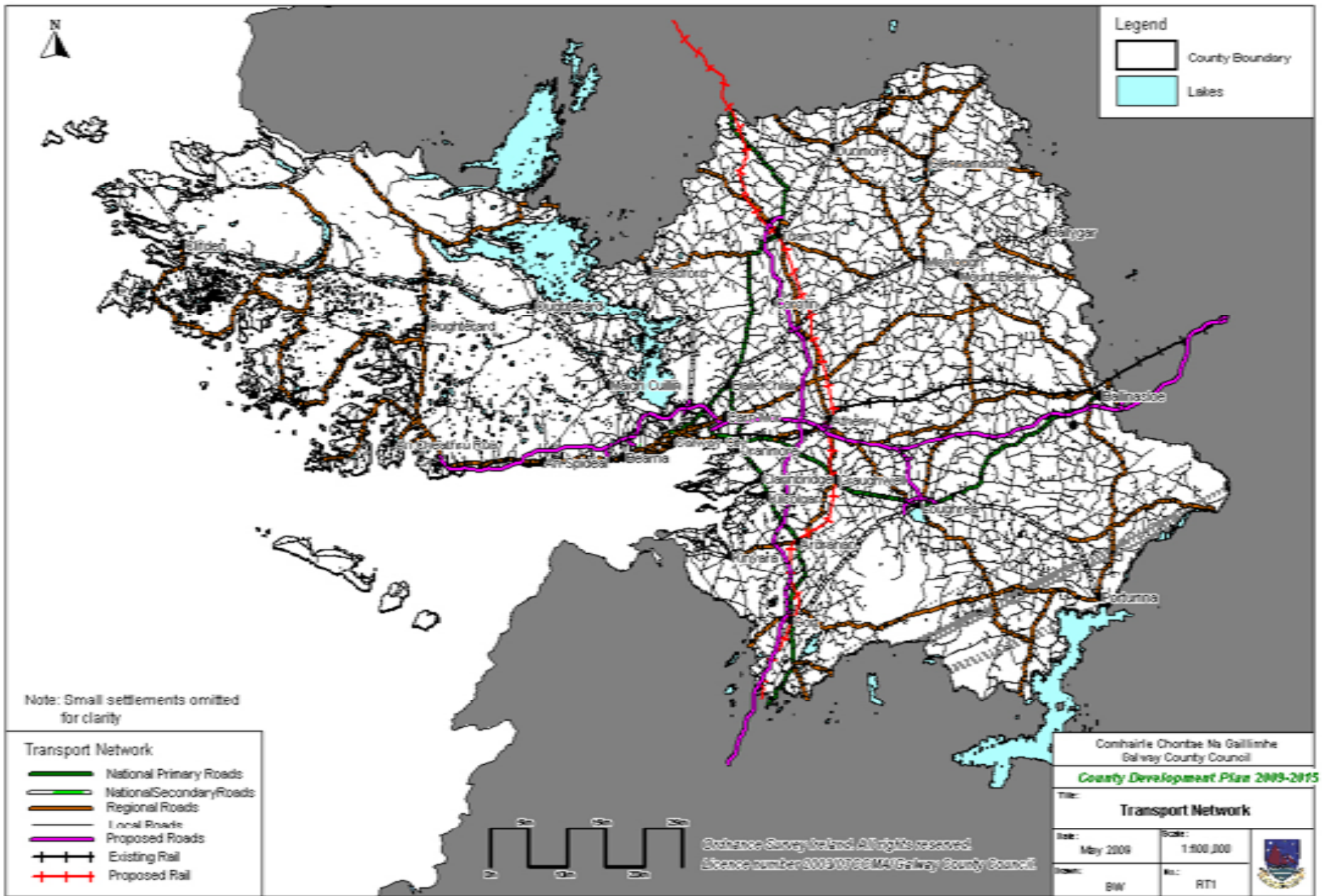
Ordnance Survey Ireland. All rights reserved.
Licence number 2003/07CCMA/Galway County Council.

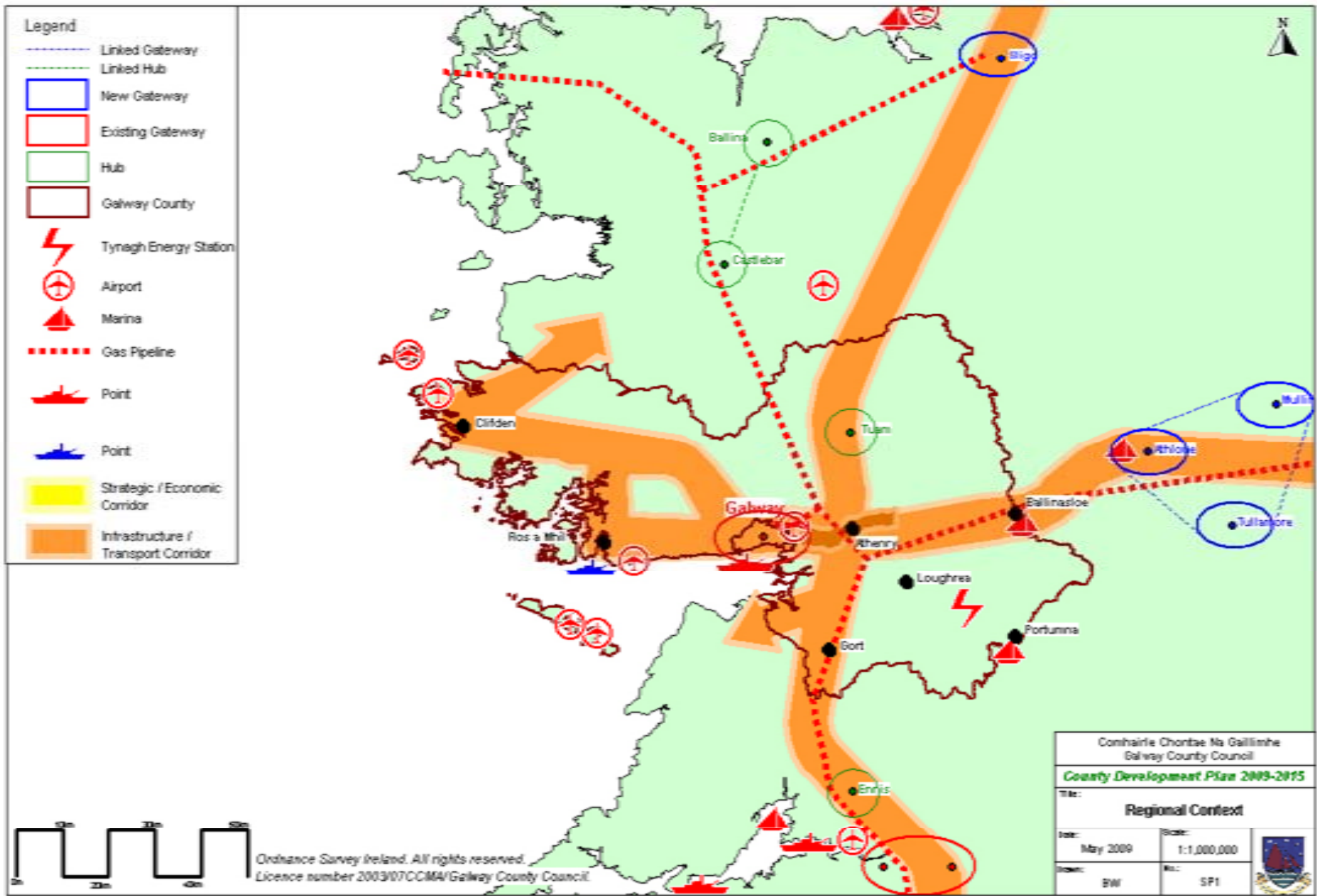
Comhairle Chontae Na Gaillimhe
Galway County Council
County Development Plan 2009-2015

Title: Settlement Population

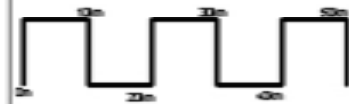
Date: May 2009
Scale: 1:600,000
Drawn: BW
No.: PD2





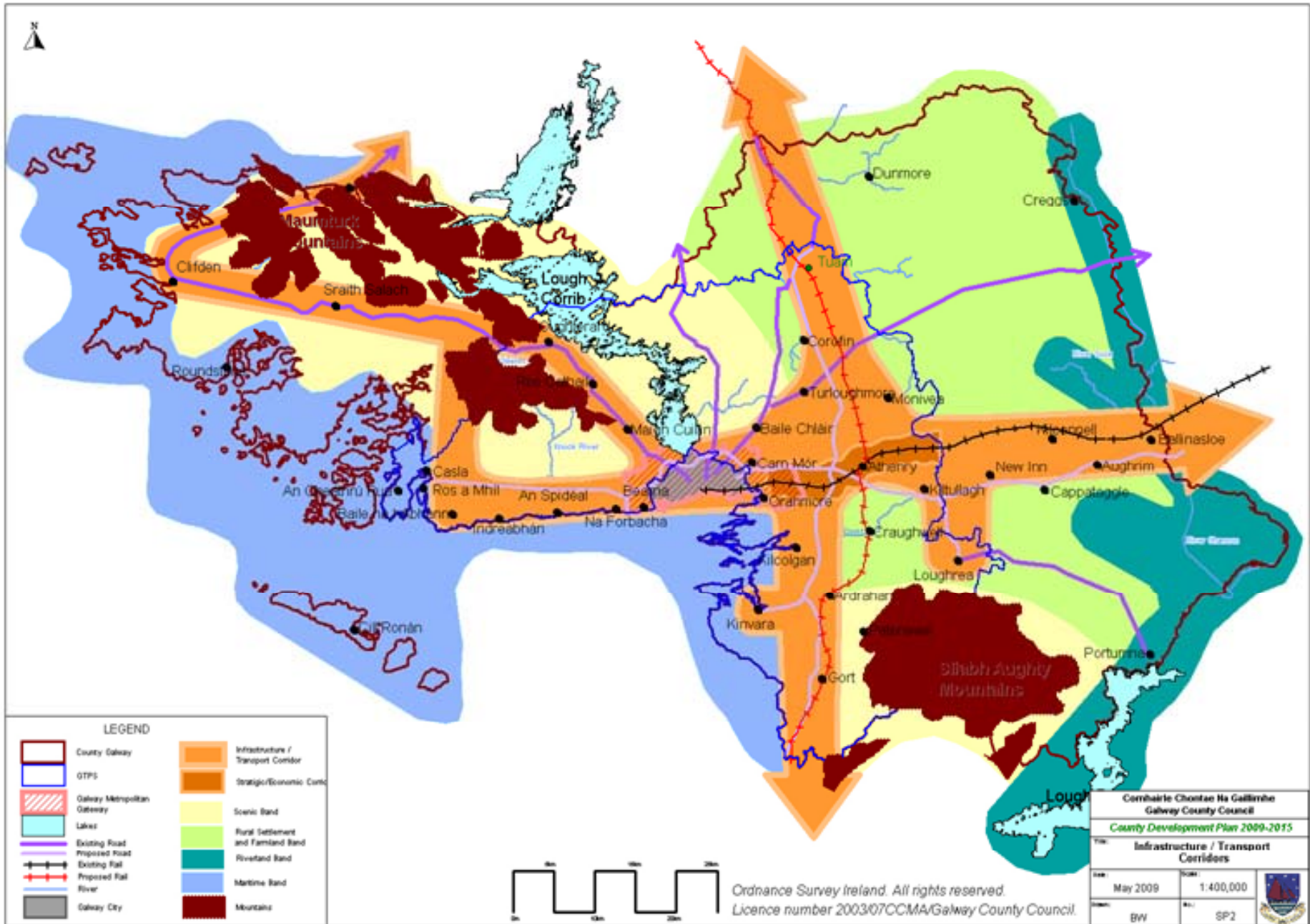


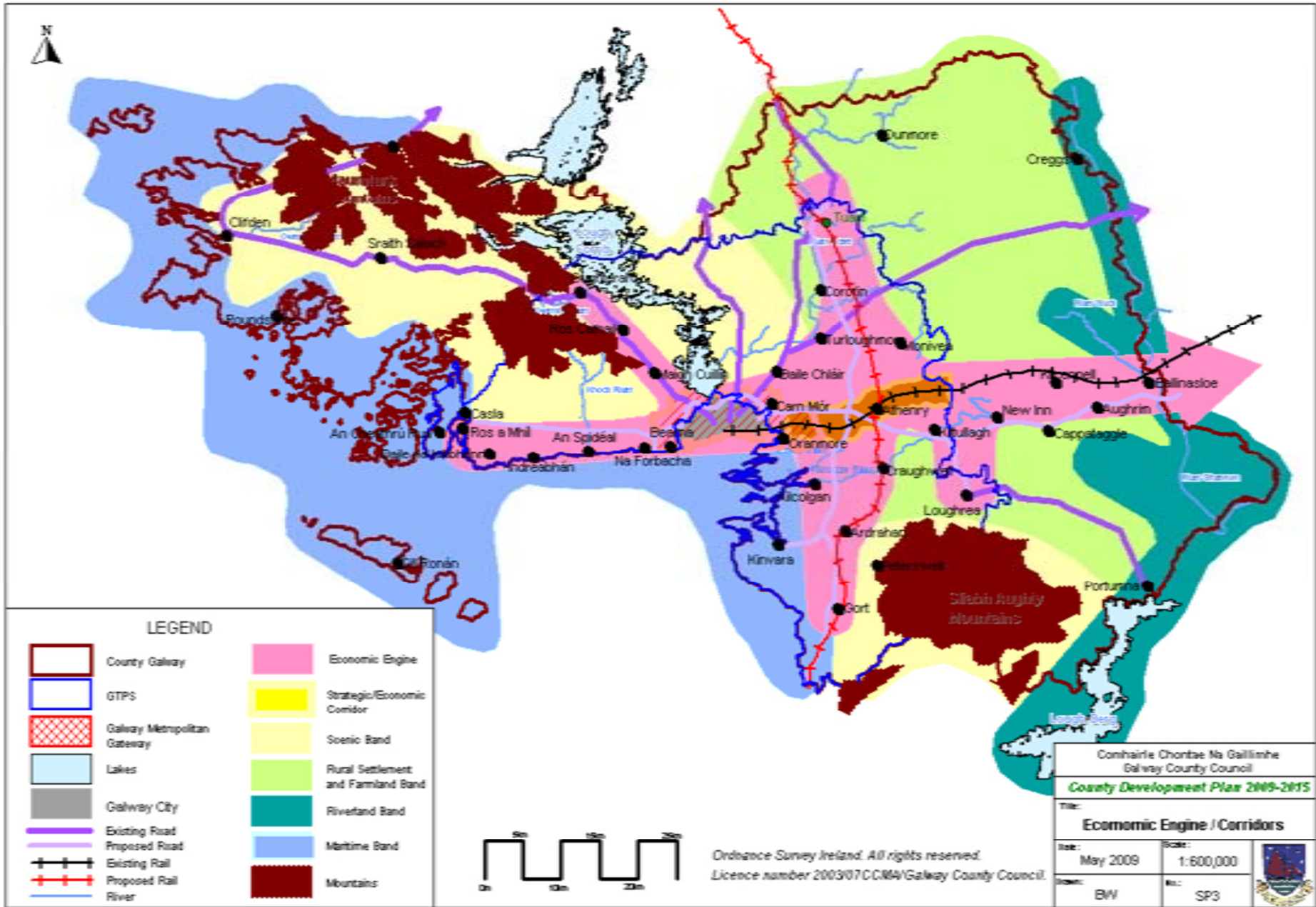
- Legend**
- Linked Gateway
 - Linked Hub
 - New Gateway
 - Existing Gateway
 - Hub
 - Galway County
 - ⚡ Tynagh Energy Station
 - ✈ Airport
 - ⚓ Marina
 - ⋯ Gas Pipeline
 - ⚓ Point
 - ⚓ Point
 - ▭ Strategic / Economic Corridor
 - ▭ Infrastructure / Transport Corridor



Ordnance Survey Ireland. All rights reserved.
 Licence number 2003/07CCIM4/Galway County Council

Comhairle Chontae Na Gaillimhe Galway County Council		
County Development Plan 2009-2015		
Title: Regional Context		
Date: May 2009	Scale: 1:1,000,000	
Drawn: BW	No.: SP1	





LEGEND

-  County Gateway
-  GTPS
-  Galway Metropolitan Gateway
-  Lakes
-  Galway City
-  Existing Road
-  Proposed Road
-  Existing Rail
-  Proposed Rail
-  River
-  Economic Engine
-  Strategic/Economic Corridor
-  Scenic Band
-  Rural Settlement and Farmland Band
-  Riverland Band
-  Maritime Band
-  Mountains




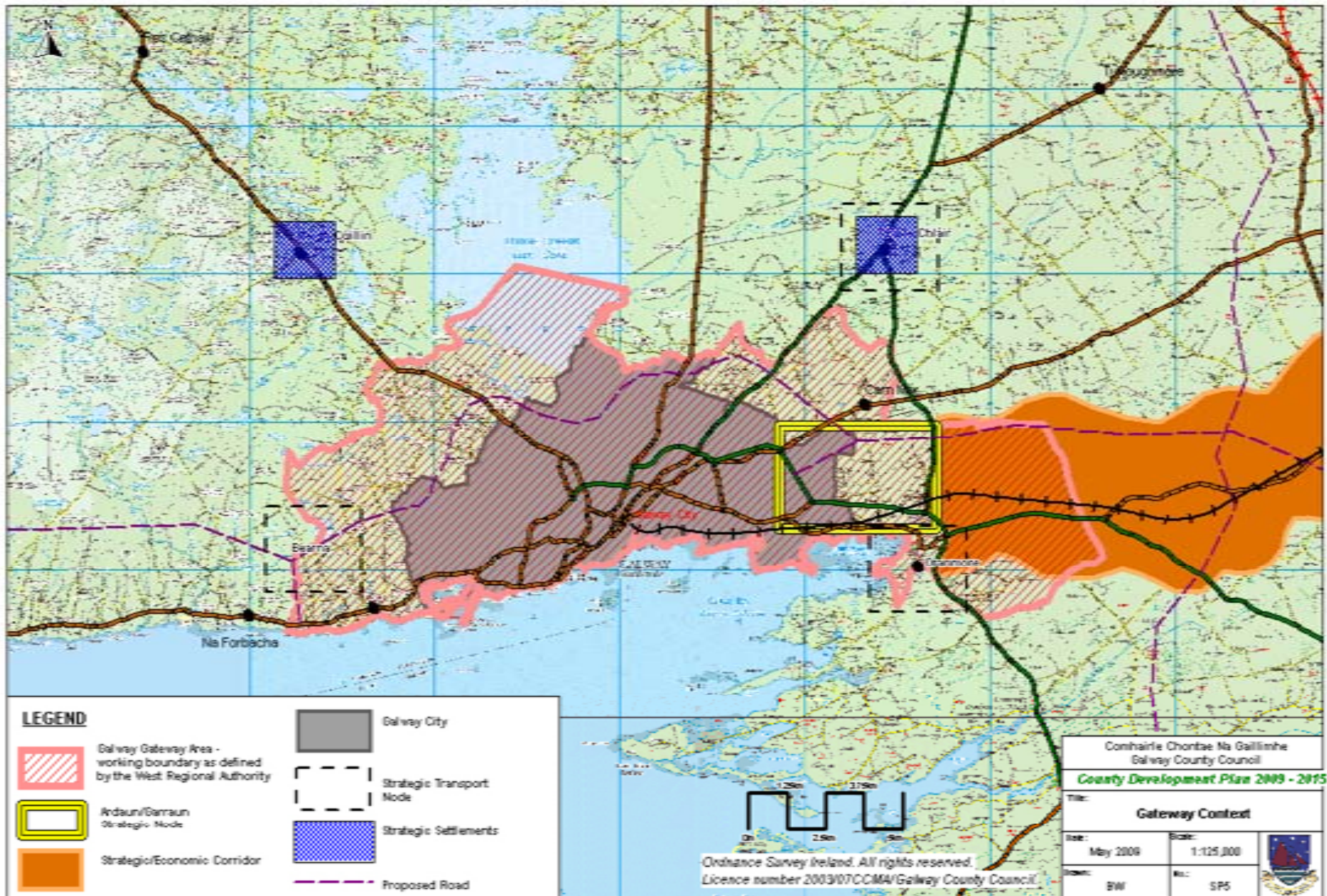
Ordnance Survey Ireland. All rights reserved.
Licence number 2003/07 CCMA/Galway County Council.

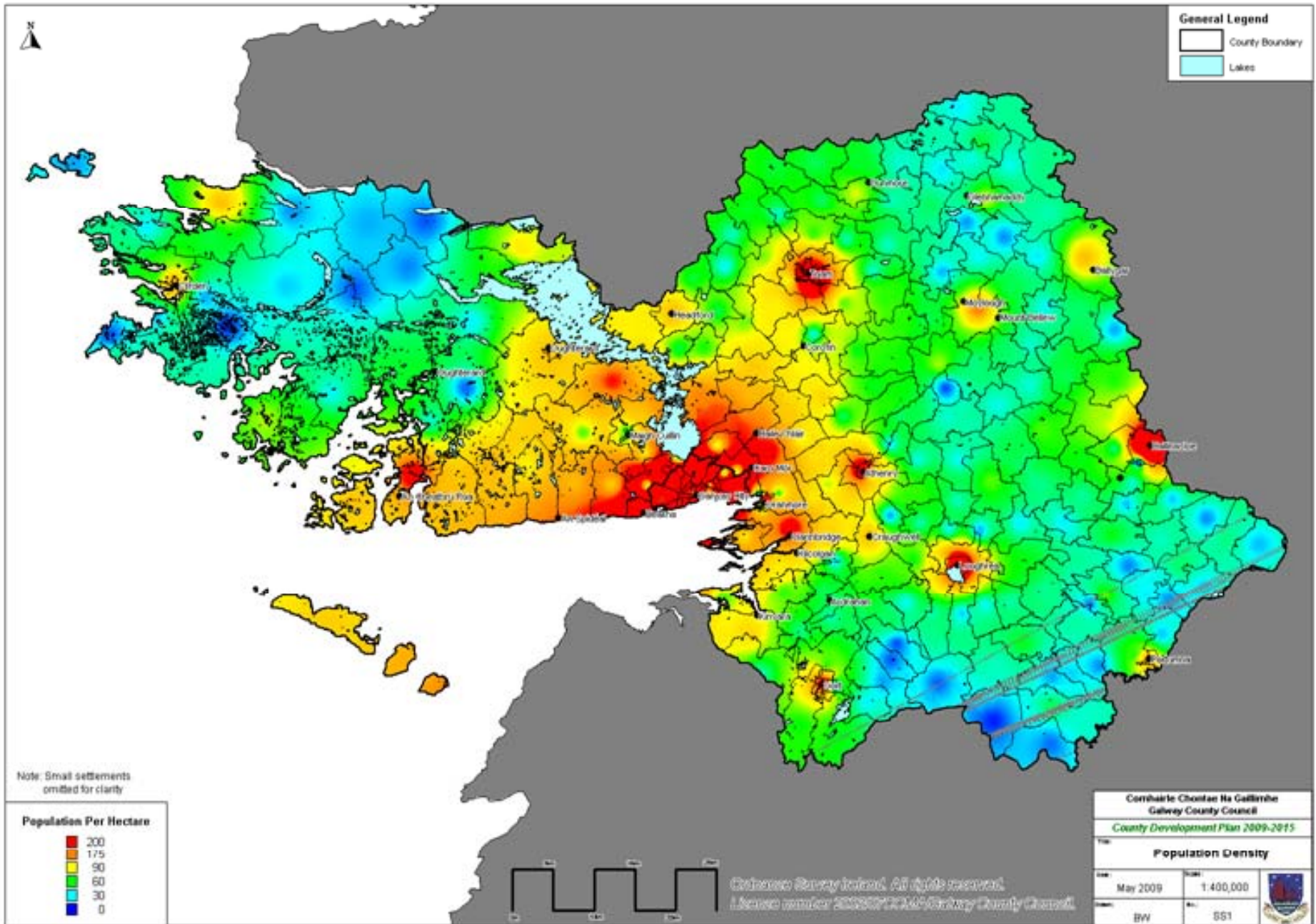
Comhairle Chontae Na Gallimhe
Galway County Council

County Development Plan 2009-2015

Title:
Economic Engine / Corridors

Issue: May 2009	Scale: 1:600,000	
Author: BW	Editor: SP3	





General Legend

- County Boundary
- Lakes

Note: Small settlements omitted for clarity

Population Per Hectare

- 200
- 175
- 90
- 60
- 30
- 0

Cóirle Chomair Na Galltíne
Galway County Council

County Development Plan 2009-2015








Population Density

Date: May 2009	Scale: 1:400,000	
Code: BW	Proj: SS1	

*Galway Survey Ireland. All rights reserved.
License number 200807131469 Galway County Council.*



Legend

-  Infrastructure/ Transport Corridor
-  Existing Rail
-  Proposed Rail
-  Galway Metropolitan Gateway
-  Gateway Local Service Centre
-  Service Hub
-  Hub Town

Note: Small Settlements not shown (refer to tables)



Ordnance Survey Ireland. All rights reserved.
Licence number 2003/07/CC/M4/Galway County Council.

Comhairle Chontae Na Gaillimhe Galway County Council	
County Development Plan 2009-2015	
Title: Settlement Hierarchy	
Date: May 2009	Scale: 1:600,000
Drawn: BW	No.: 552

